

STATE OF FLORIDA
DEPARTMENT OF TRANSPORTATION

***TRAFFIC INCIDENT
MANAGEMENT PLAN
FOR INTERSTATE 75***

SUMTER COUNTY

PLANS PREPARED BY

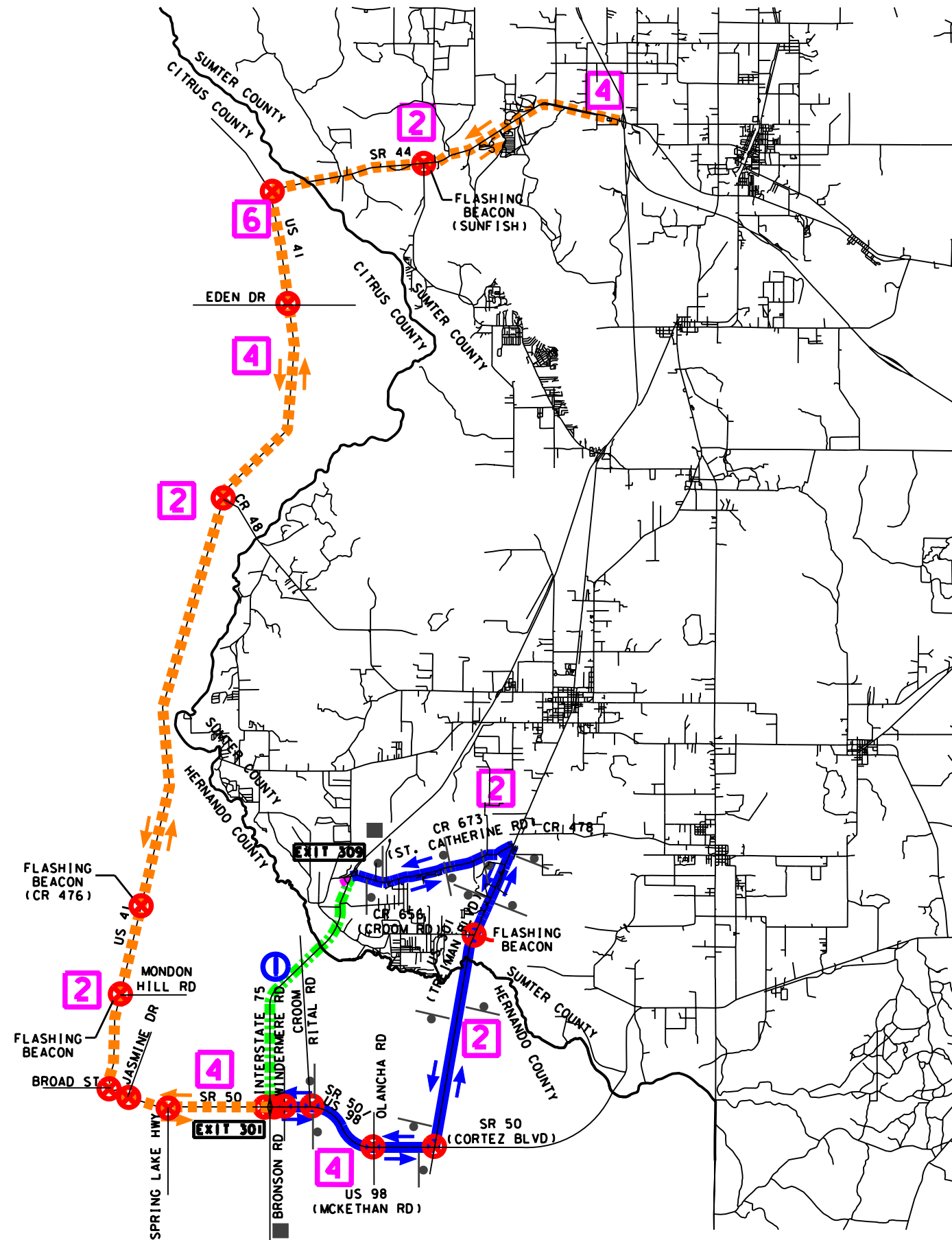
HNTB

HNTB CORPORATION
300 PRIMERA BLVD., SUITE 200
LAKE MARY, FL 32746
(407) 805-0355
ENGINEERING BUSINESS NO. EB6185

I-75 DETOUR ROUTE	FIGURE
SR 50 (US 98) TO CR 673	1
CR 673 TO SR 48	2
SR 48 TO CR 470	3
CR 470 TO SR 44	4
SR 44 TO CR 484	5

SUMTER COUNTY
Traffic Incident Management Contact List

Map Pages	Name	Phone	E-mail
ALL	Florida Highway Patrol, Tampa Regional Communications Center	813-631-4020	



LEGEND

- ▬▬▬▬▬ CLOSED PORTION OF INTERSTATE
- ▬▬▬▬▬ RAMP TO BE CLOSED
- ▬▬▬▬▬ PRIMARY ALTERNATE ROUTES
- ▬▬▬▬▬ SECONDARY ALTERNATE ROUTES
- 2 NUMBER OF LANES
- 0 INCIDENT LOCATION
- ➔ DIRECTION OF ROUTED TRAFFIC
- X SIGNALIZED INTERSECTION
- o EXISTING DETOUR SIGN
- o PROPOSED DETOUR SIGN
- PROPOSED VMS SIGN

LIMITS OF CLOSURE:
 SR 50 (US 98) TO CR 673 (ST. CATHERINE RD)

RAMPS TO CLOSE: (2)
 SR 50 (US 98) NB ENTRANCE RAMP
 CR 673 SB ENTRANCE RAMP

NB I-75 PRIMARY REROUTE:
 1) USE SR 50 (US 98) EXIT.
 2) TURN RIGHT ON SR 50 (US 98).
 3) TURN LEFT ON US 301 (TREIMAN BLVD).
 4) TURN LEFT ON CR 673 (ST. CATHERINE RD).

SB I-75 PRIMARY REROUTE:
 1) USE CR 673 (ST. CATHERINE RD) EXIT.
 2) TURN LEFT ON CR 673 (ST. CATHERINE RD)
 3) TURN RIGHT ON US 301 (TREIMAN BLVD).
 4) TURN RIGHT ON SR 50 (US 98).

NB I-75 SECONDARY REROUTE:
 1) USE SR 50 (US 98) EXIT.
 2) TURN LEFT ON SR 50 (US 98).
 3) TURN RIGHT ON US 41.
 4) TURN RIGHT ON SR 44.

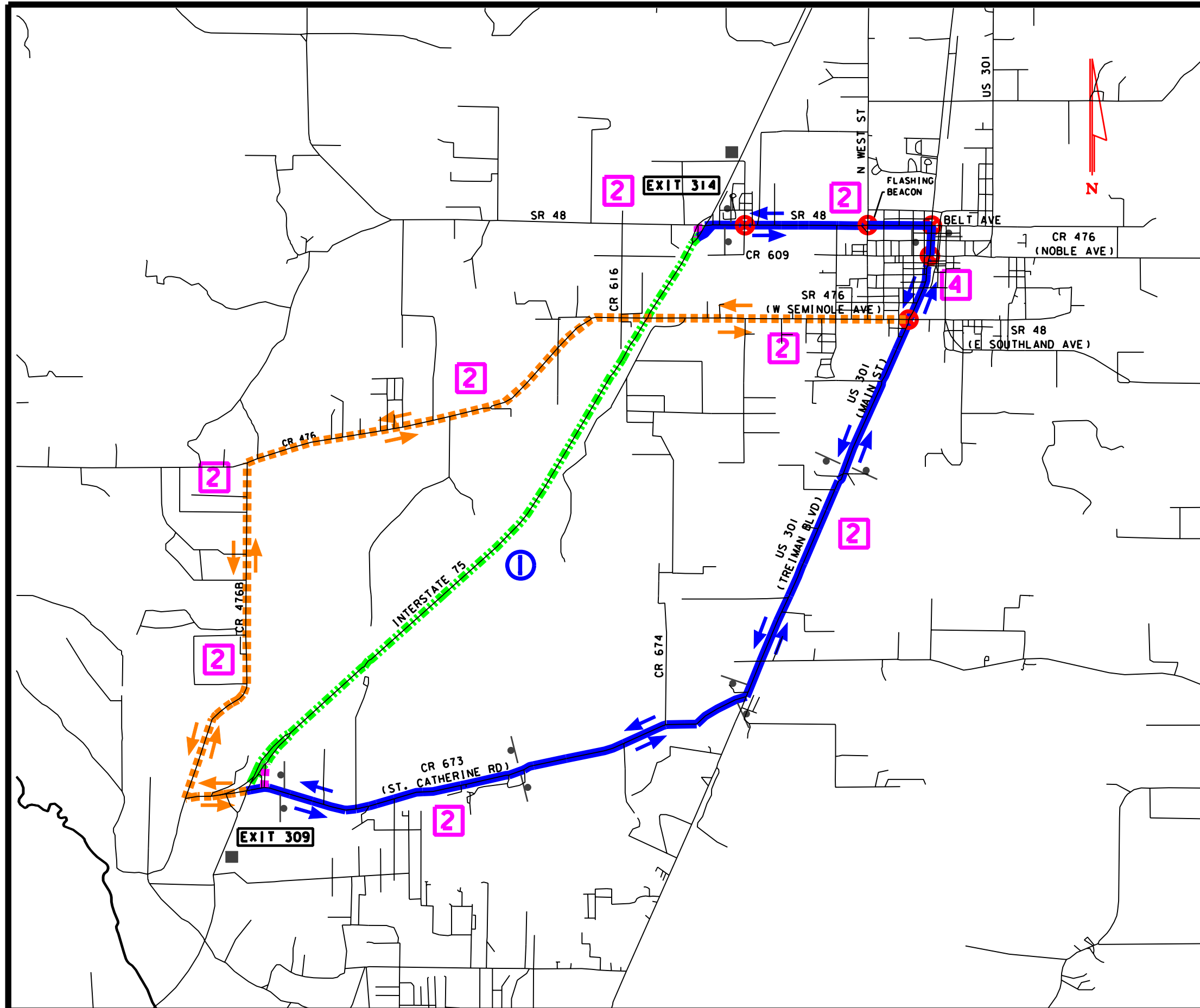
SB I-75 SECONDARY REROUTE:
 1) USE SR 44 EXIT.
 2) TURN RIGHT ON SR 44
 3) TURN LEFT ON US 41.
 4) TURN LEFT ON SR 50 (US 98).

NOTE: LAW ENFORCEMENT TO BE USED AT INTERSECTIONS AS NECESSARY.

REVISIONS		
DATE	BY	DESCRIPTION

ROAD CLOSURE FROM:
SR 50 (US 98) TO
CR 673 (ST. CATHERINE RD)

TRAFFIC INCIDENT MANAGEMENT PLAN	FIGURE 1
----------------------------------	----------



LEGEND

- ▬▬▬▬▬▬ CLOSED PORTION OF INTERSTATE
- ▬▬▬▬▬▬ RAMP TO BE CLOSED
- ▬▬▬▬▬▬ PRIMARY ALTERNATE ROUTES
- ▬▬▬▬▬▬ SECONDARY ALTERNATE ROUTES
- 2 NUMBER OF LANES
- 1 INCIDENT LOCATION
- DIRECTION OF ROUTED TRAFFIC
- ⊗ SIGNALIZED INTERSECTION
- ⊕ EXISTING DETOUR SIGN
- ⊖ PROPOSED DETOUR SIGN
- PROPOSED VMS SIGN

LIMITS OF CLOSURE:
 CR 673 (ST. CATHERINE RD) TO SR 48

RAMPS TO CLOSE: (2)
 CR 673 NB ENTRANCE RAMP
 SR 48 SB ENTRANCE RAMP

NB I-75 PRIMARY REROUTE:

- 1) USE CR 673 (ST. CATHERINE RD) EXIT.
- 2) TURN LEFT ON CR 673 (ST. CATHERINE RD).
- 3) TURN LEFT ON US 301 (TREIMAN BLVD).
- 4) TURN LEFT ON SR 48.

SB I-75 PRIMARY REROUTE:

- 1) USE SR 48 EXIT.
- 2) TURN LEFT ON SR 48.
- 3) TURN RIGHT ON US 301 (MAIN ST).
- 4) TURN RIGHT ON CR 673 (ST. CATHERINE RD).

NB I-75 SECONDARY REROUTE:

- 1) USE CR 673 EXIT.
- 2) TURN RIGHT ON CR 673.
- 3) TURN RIGHT ON CR 476B.
- 4) TURN RIGHT ON CR 476.
- 5) TURN LEFT ON US 301 (MAIN ST).
- 6) TURN LEFT ON SR 48.

SB I-75 SECONDARY REROUTE:

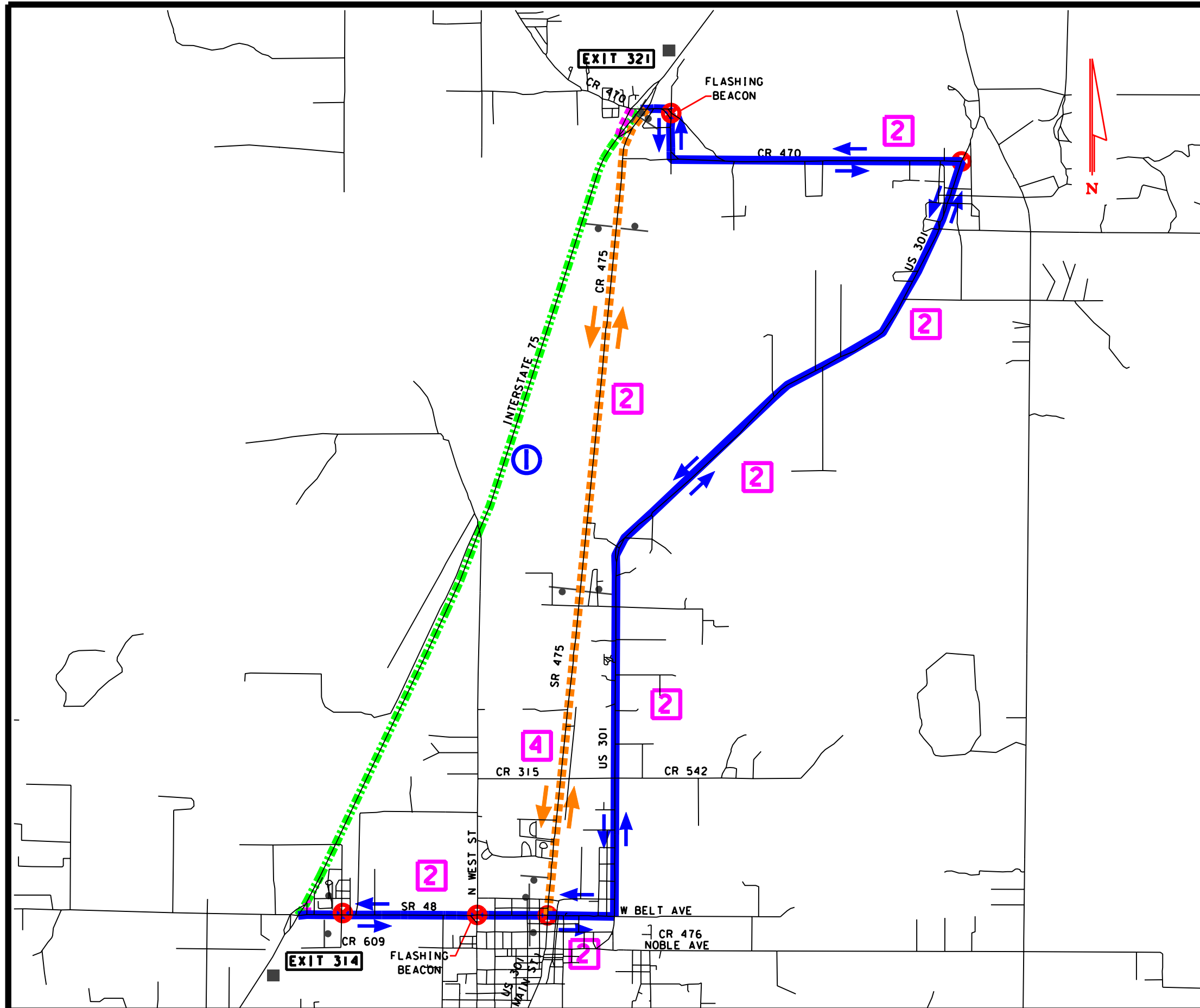
- 1) USE SR 48 EXIT.
- 2) TURN LEFT ON SR 48.
- 3) TURN RIGHT ON US 301 (MAIN ST).
- 4) TURN RIGHT ON CR 476.
- 5) TURN LEFT ON CR 476B.
- 6) TURN LEFT ON CR 673.

NOTE: LAW ENFORCEMENT TO BE USED AT INTERSECTIONS AS NECESSARY.

REVISIONS		
DATE	BY	DESCRIPTION

ROAD CLOSURE FROM:
 CR 673 (ST. CATHERINE RD)
 TO SR 48

TRAFFIC INCIDENT MANAGEMENT PLAN	FIGURE 2
---	--------------------



LEGEND

- ▬▬▬▬▬ CLOSED PORTION OF INTERSTATE
- ▬▬▬▬▬ RAMP TO BE CLOSED
- ▬▬▬▬▬ PRIMARY ALTERNATE ROUTES
- ▬▬▬▬▬ SECONDARY ALTERNATE ROUTES
- 2 NUMBER OF LANES
- ⊖ INCIDENT LOCATION
- ➔ DIRECTION OF ROUTED TRAFFIC
- ⊗ SIGNALIZED INTERSECTION
- ⊖ EXISTING DETOUR SIGN
- ⊖ PROPOSED DETOUR SIGN
- ▬ PROPOSED VMS SIGN

LIMITS OF CLOSURE:
SR 48 TO CR 470

RAMPS TO CLOSE: (2)
SR 48 NB ENTRANCE RAMP
CR 470 SB ENTRANCE RAMP

NB I-75 PRIMARY REROUTE:

- 1) USE SR 48 EXIT.
- 2) TURN RIGHT ON SR 48.
- 3) CONTINUE STRAIGHT ONTO W BELT AVE.
- 4) TURN LEFT ON US 301.
- 5) TURN LEFT ON CR 470.

SB I-75 PRIMARY REROUTE:

- 1) USE CR 470 EXIT.
- 2) TURN LEFT ON CR 470.
- 3) TURN RIGHT ON US 301.
- 4) TURN RIGHT ON W BELT AVE.
- 5) CONTINUE STRAIGHT ONTO SR 48.

NB I-75 SECONDARY REROUTE:

- 1) USE SR 48 EXIT.
- 2) TURN RIGHT ON SR 48.
- 3) TURN LEFT ON SR 475.
- 4) TURN LEFT ON CR 470.

SB I-75 SECONDARY REROUTE:

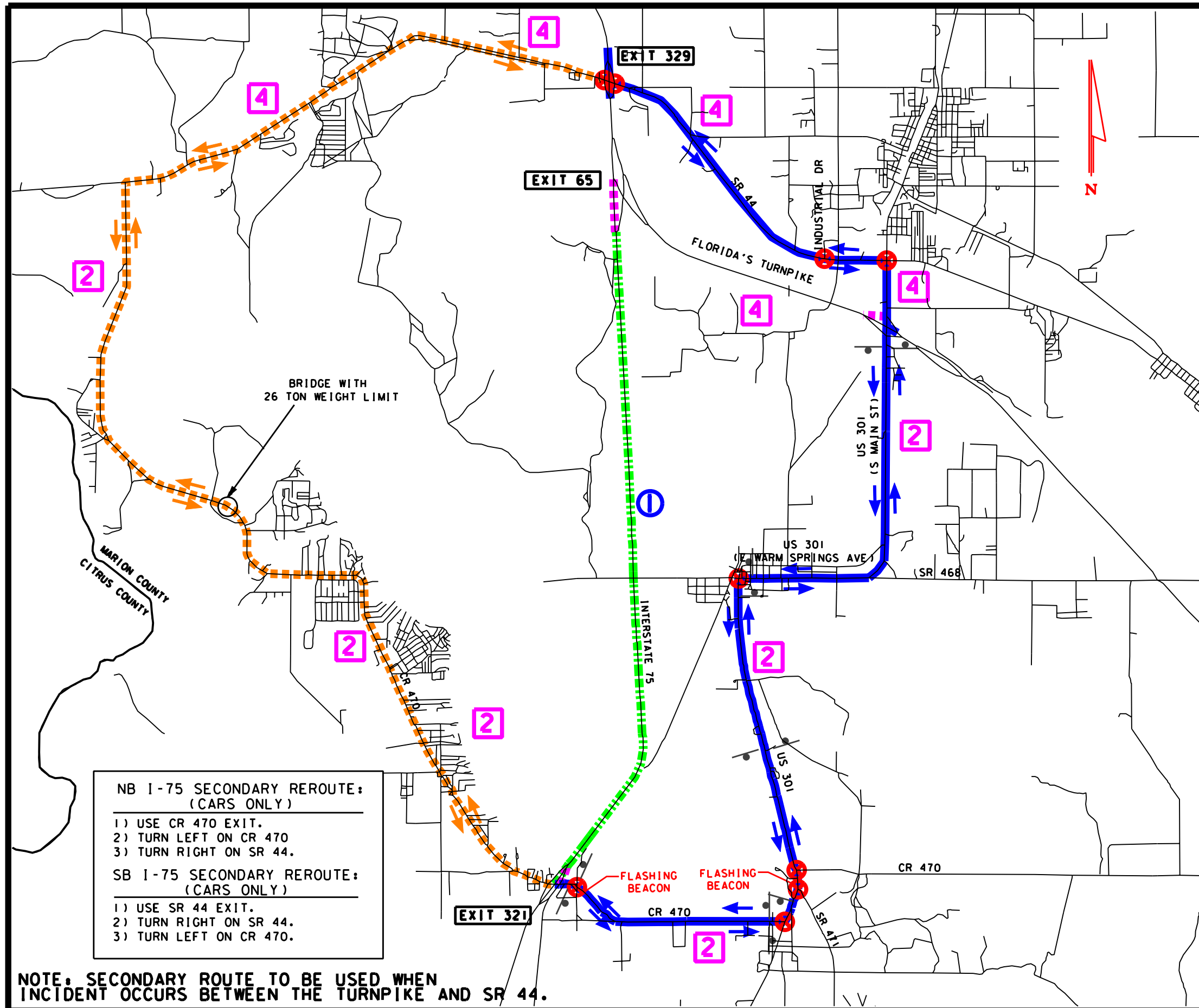
- 1) USE CR 470 EXIT.
- 2) TURN LEFT ON CR 470.
- 3) TURN RIGHT ON CR 475.
- 4) TURN RIGHT ON SR 48.

NOTE: LAW ENFORCEMENT TO BE USED AT INTERSECTIONS AS NECESSARY.

REVISIONS		
DATE	BY	DESCRIPTION

ROAD CLOSURE FROM:
SR 48 TO CR 470

TRAFFIC INCIDENT MANAGEMENT PLAN	FIGURE 3
----------------------------------	--------------------



LEGEND

- ▬▬▬▬▬ CLOSED PORTION OF INTERSTATE
- ▬▬▬▬▬ RAMP TO BE CLOSED
- ▬▬▬▬▬ PRIMARY ALTERNATE ROUTES
- ▬▬▬▬▬ SECONDARY ALTERNATE ROUTES
- 2 NUMBER OF LANES
- 1 INCIDENT LOCATION
- ➔ DIRECTION OF ROUTED TRAFFIC
- X SIGNALIZED INTERSECTION
- o EXISTING DETOUR SIGN
- o PROPOSED DETOUR SIGN
- PROPOSED VMS SIGN

- LIMITS OF CLOSURE:**
CR 470 TO SR 44
- RAMPS TO CLOSE: (3)**
CR 470 NB ENTRANCE RAMP
SR 44 SB ENTRANCE RAMP
US 301 NB TURNPIKE ENTRANCE RAMP
- NB I-75 PRIMARY REROUTE:**
- 1) USE CR 470 EXIT.
 - 2) TURN RIGHT ON CR 470.
 - 3) TURN LEFT ON US 301.
 - 4) TURN RIGHT ON US 301 (E WARM SPRINGS RD).
 - 5) TURN LEFT ON SR 44.
- SB I-75 PRIMARY REROUTE:**
- 1) USE SR 44 EXIT.
 - 2) TURN RIGHT ON US 301 (E WARM SPRINGS AVE).
 - 3) TURN LEFT ON US 301.
 - 4) TURN RIGHT ON CR 470.
- NB I-75 SECONDARY REROUTE (CARS & TRUCKS):**
- 1) USE CR 470 EXIT.
 - 2) TURN RIGHT ON CR 470
 - 3) TURN LEFT ON US 301.
 - 4) TURN RIGHT ON US 301 (E WARM SPRINGS AVE)
 - 5) TURN LEFT ON SR 44.
- SB I-75 SECONDARY REROUTE (CARS & TRUCKS):**
- 1) USE SR 44 EXIT.
 - 2) TURN LEFT ON SR 44.
 - 3) TURN RIGHT ON US 301 (S MAIN ST)
 - 4) TURN LEFT ON US 301
 - 5) TURN RIGHT ON CR 470.

NOTE: LAW ENFORCEMENT TO BE USED AT INTERSECTIONS AS NECESSARY.

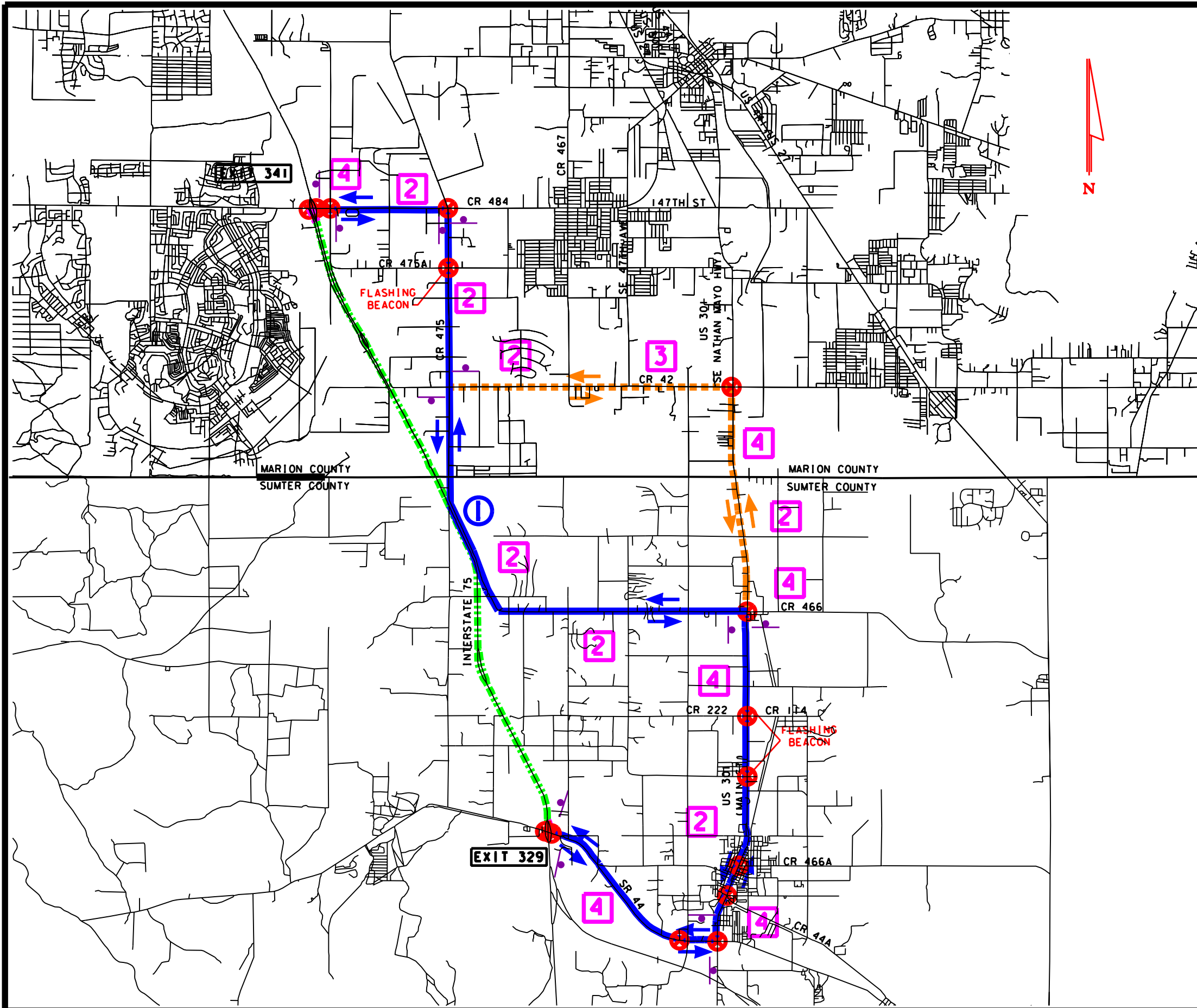
- NB I-75 SECONDARY REROUTE: (CARS ONLY)**
- 1) USE CR 470 EXIT.
 - 2) TURN LEFT ON CR 470
 - 3) TURN RIGHT ON SR 44.
- SB I-75 SECONDARY REROUTE: (CARS ONLY)**
- 1) USE SR 44 EXIT.
 - 2) TURN RIGHT ON SR 44.
 - 3) TURN LEFT ON CR 470.

NOTE: SECONDARY ROUTE TO BE USED WHEN INCIDENT OCCURS BETWEEN THE TURNPIKE AND SR 44.

REVISIONS		
DATE	BY	DESCRIPTION

ROAD CLOSURE FROM:
CR 470 TO SR 44

TRAFFIC INCIDENT MANAGEMENT PLAN	FIGURE 4
---	--------------------



LEGEND

- CLOSED PORTION OF INTERSTATE
- RAMP TO BE CLOSED
- PRIMARY ALTERNATE ROUTES
- SECONDARY ALTERNATE ROUTES
- 2 NUMBER OF LANES
- 1 INCIDENT LOCATION
- DIRECTION OF ROUTED TRAFFIC
- X SIGNALIZED INTERSECTION
- o EXISTING DETOUR SIGN
- o PROPOSED DETOUR SIGN
- PROPOSED VMS SIGN

LIMITS OF CLOSURE:
 SR 44 TO CR 484

RAMPS TO CLOSE: (2)
 SR 44 NB ENTRANCE RAMP
 CR 484 SB ENTRANCE RAMP

NB I-75 PRIMARY REROUTE:
 1) USE SR 44 EXIT.
 2) TURN RIGHT ON SR 44.
 3) TURN LEFT ON US 301 (MAIN ST).
 4) TURN LEFT ON CR 466/475.
 5) TURN LEFT ON CR 484.

SB I-75 PRIMARY REROUTE:
 1) USE CR 484 EXIT.
 2) TURN LEFT ON CR 484.
 3) TURN RIGHT ON CR 466/475.
 4) TURN RIGHT ON US 301 (MAIN ST).
 5) TURN RIGHT ON SR 44.

NB I-75 SECONDARY REROUTE:
 1) USE SR 44 EXIT.
 2) TURN RIGHT ON SR 44.
 3) TURN LEFT ON US 301 (MAIN ST).
 4) TURN LEFT ON CR 42.
 5) TURN RIGHT ON CR 475.

SB I-75 SECONDARY REROUTE:
 1) USE CR 484 EXIT.
 2) TURN LEFT ON CR 484.
 3) TURN RIGHT ON CR 475.
 4) TURN LEFT ON CR 42.
 5) TURN RIGHT ON US 301 (SE NATHAN MAYO HWY).
 6) TURN RIGHT ON SR 44.

NOTE: LAW ENFORCEMENT TO BE USED AT INTERSECTIONS AS NECESSARY.

REVISIONS		
DATE	BY	DESCRIPTION

ROAD CLOSURE FROM:
SR 44 TO CR 484

TRAFFIC INCIDENT MANAGEMENT PLAN	FIGURE 5
---	--------------------