

STATE OF FLORIDA
DEPARTMENT OF TRANSPORTATION

***TRAFFIC INCIDENT
MANAGEMENT PLAN
FOR INTERSTATE 75***

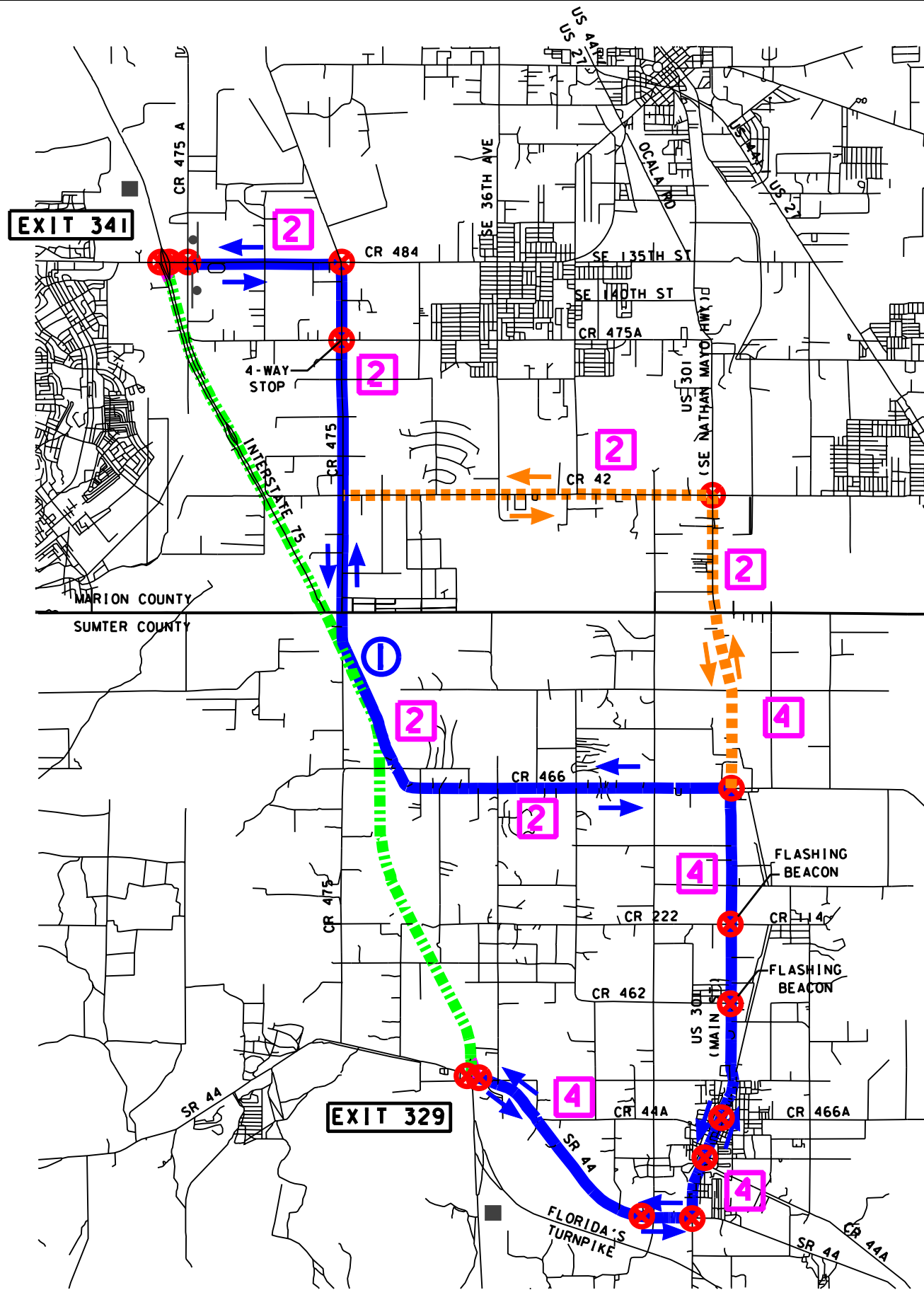
MARION COUNTY

PLANS PREPARED BY
HNTB
HNTB CORPORATION
300 PRIMERA BLVD., SUITE 200
LAKE MARY, FL 32746
(407) 805-0355
ENGINEERING BUSINESS NO. EB6185

| I - 75 DETOUR ROUTE | FIGURE |
|----------------------------|---------------|
| SR 44 TO CR 484 | 1 |
| CR 484 TO SR 200 | 2 |
| SR 200 TO SR 40 | 3 |
| SR 40 AND SR 500 | 4 |
| SR 500 (US 27) TO SR 326 | 5 |
| SR 326 TO CR 318 | 6 |
| CR 318 TO CR 234 | 7 |

MARION COUNTY
Traffic Incident Management Contact List

| Map Pages | Name | Phone | E-mail |
|------------------|---------------------------------|--------------|---------------|
| | | | |
| | No contact information provided | | |
| | | | |



LEGEND

- ▬▬▬▬▬ CLOSED PORTION OF INTERSTATE RAMP TO BE CLOSED
- ▬▬▬▬▬ PRIMARY ALTERNATE ROUTES
- ▬▬▬▬▬ SECONDARY ALTERNATE ROUTES
- 2 NUMBER OF LANES
- 1 INCIDENT LOCATION
- ➔ DIRECTION OF ROUTED TRAFFIC
- ⊗ SIGNALIZED INTERSECTION
- EXISTING DETOUR SIGN
- PROPOSED DETOUR SIGN
- PROPOSED VMS SIGN

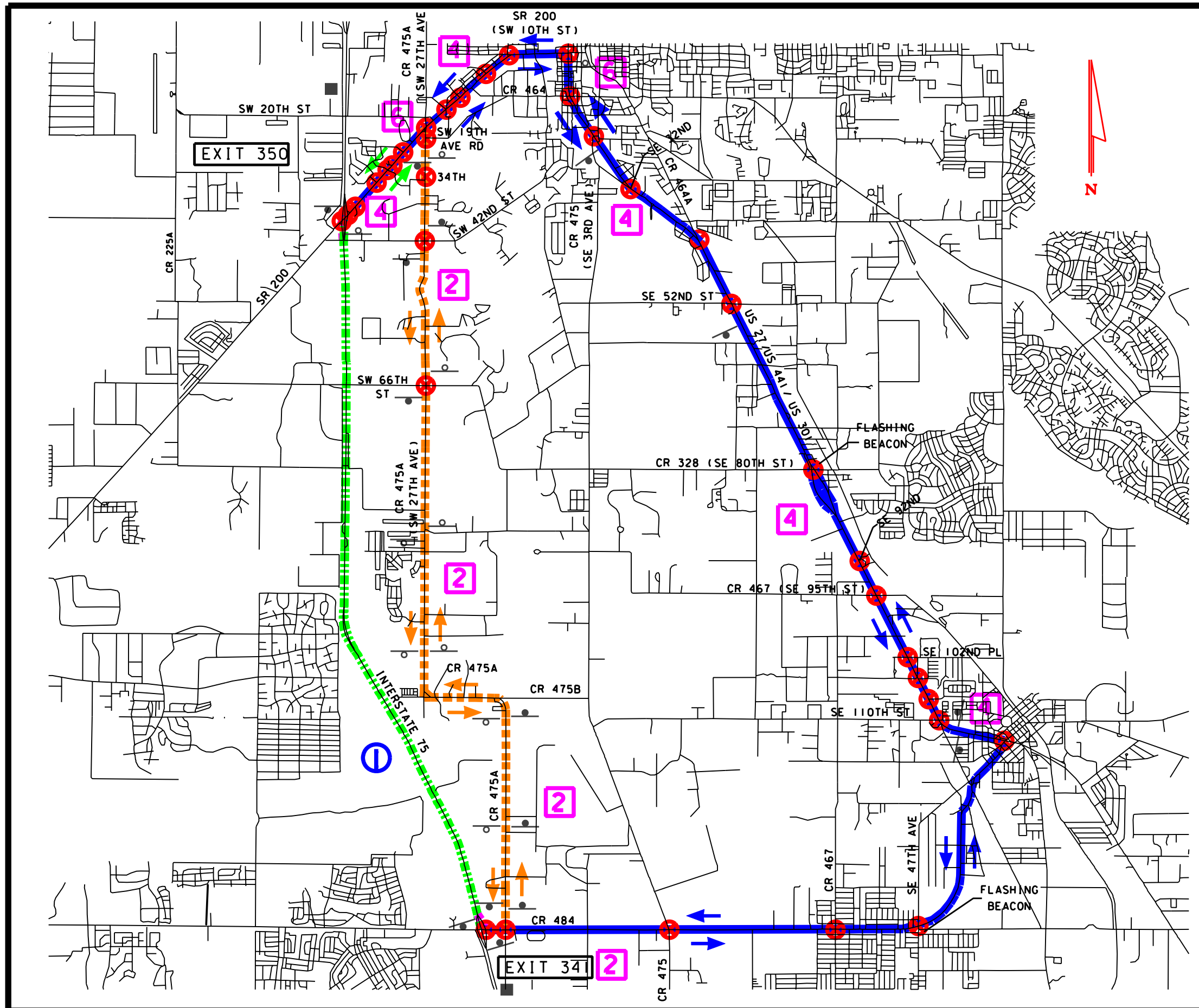
- LIMITS OF CLOSURE:**
SR 44 TO CR 484
- RAMPS TO CLOSE: (2)**
SR 44 NB ENTRANCE RAMP
CR 484 SB ENTRANCE RAMP
- NB I-75 PRIMARY REROUTE:**
- 1) USE SR 44 EXIT.
 - 2) TURN RIGHT ON SR 44.
 - 3) TURN LEFT ON US 301 (MAIN ST).
 - 4) TURN LEFT ON CR 466/475.
 - 5) TURN LEFT ON CR 484.
- SB I-75 PRIMARY REROUTE:**
- 1) USE CR 484 EXIT.
 - 2) TURN LEFT ON CR 484.
 - 3) TURN RIGHT ON CR 466/475.
 - 4) TURN RIGHT ON US 301 (MAIN ST).
 - 5) TURN RIGHT ON SR 44.
- NB I-75 SECONDARY REROUTE:**
- 1) USE SR 44 EXIT.
 - 2) TURN RIGHT ON SR 44.
 - 3) TURN LEFT ON US 301 (MAIN ST).
 - 4) TURN LEFT ON CR 42.
 - 5) TURN RIGHT ON CR 466/475.
 - 6) TURN LEFT ON SR 44.
- SB I-75 SECONDARY REROUTE:**
- 1) USE CR 484 EXIT.
 - 2) TURN LEFT ON CR 484.
 - 3) TURN RIGHT ON CR 466/475.
 - 4) TURN LEFT ON SR 42.
 - 5) TURN RIGHT ON US 301 (MAIN ST).
 - 6) TURN RIGHT ON SR 44.
- NOTE: LAW ENFORCEMENT TO BE USED AT INTERSECTIONS AS NECESSARY.

| REVISIONS | | |
|-----------|----|-------------|
| DATE | BY | DESCRIPTION |
| | | |
| | | |
| | | |

ROAD CLOSURE FROM:

SR 44 TO CR 484

| | |
|----------------------------------|-------------|
| TRAFFIC INCIDENT MANAGEMENT PLAN | FIGURE 1 |
|----------------------------------|-------------|



LEGEND

- ▬▬▬▬▬ CLOSED PORTION OF INTERSTATE
- ▬▬▬▬▬ RAMP TO BE CLOSED
- ▬▬▬▬▬ PRIMARY ALTERNATE ROUTES
- ▬▬▬▬▬ SECONDARY ALTERNATE ROUTES
- 2 NUMBER OF LANES
- 1 INCIDENT LOCATION
- DIRECTION OF ROUTED TRAFFIC
- 1 SIGNALIZED INTERSECTION
- 1 EXISTING DETOUR SIGN
- 1 PROPOSED DETOUR SIGN
- 1 PROPOSED VMS SIGN

LIMITS OF CLOSURE:
CR 484 TO SR 200

RAMPS TO CLOSE: (2)
CR 484 NB ENTRANCE RAMP
SR 200 SB ENTRANCE RAMP

NB I-75 PRIMARY REROUTE:

- 1) USE CR 484 EXIT.
- 2) TURN RIGHT ON CR 484.
- 3) TURN LEFT ON US 27/441/301.
- 4) TURN LEFT ON SR 200 (SW COLLEGE RD).

SB I-75 PRIMARY REROUTE:

- 1) USE SR 200 (SW COLLEGE RD) EXIT.
- 2) TURN LEFT ON SR 200 (SW COLLEGE RD).
- 3) TURN RIGHT ON US 27/441/301.
- 4) TURN RIGHT ON CR 484.

NB I-75 SECONDARY REROUTE:

- 1) USE CR 484 EXIT.
- 2) TURN RIGHT ON CR 484.
- 3) TURN LEFT ON CR 475A.
- 4) TURN LEFT ON CR 475A (SW 107TH PL).
- 5) TURN RIGHT ON CR 475A (SW 27TH AVE).
- 6) TURN LEFT ON SR 200 (SW COLLEGE RD).

SB I-75 SECONDARY REROUTE:

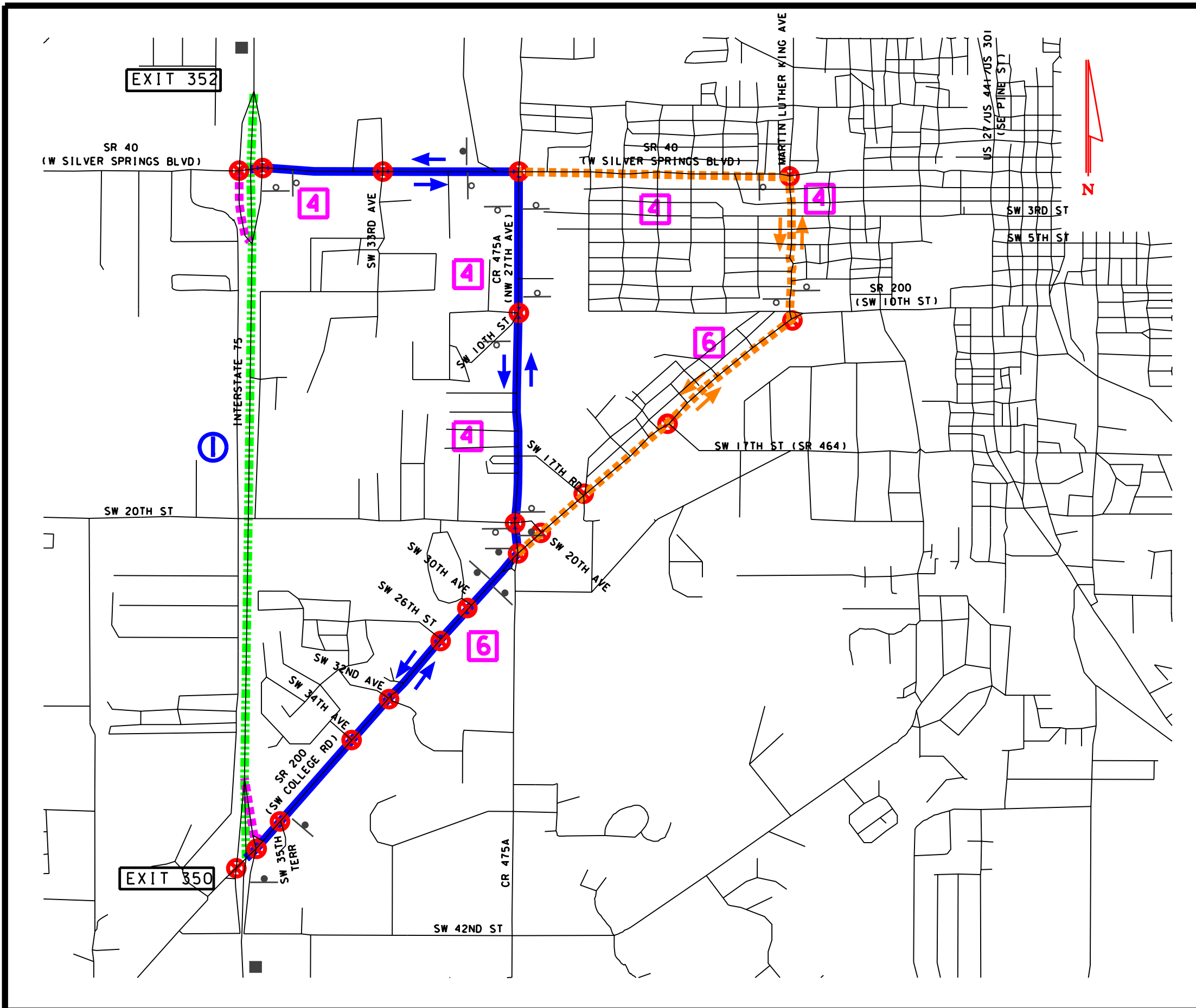
- 1) USE SR 200 (SW COLLEGE RD) EXIT.
- 2) TURN LEFT ON SR 200 (SW COLLEGE RD).
- 3) TURN RIGHT ON CR 475A (SW 27TH AVE).
- 4) TURN LEFT ON CR 475A (SW 107 PL).
- 5) TURN RIGHT ON CR 475A.
- 6) TURN RIGHT ON CR 484.

NOTE: LAW ENFORCEMENT TO BE USED AT INTERSECTIONS AS NECESSARY.

| REVISIONS | | |
|-----------|----|-------------|
| DATE | BY | DESCRIPTION |
| | | |
| | | |
| | | |

ROAD CLOSURE FROM:
CR 484 TO SR 200

| | |
|---|--------------------|
| TRAFFIC INCIDENT MANAGEMENT PLAN | FIGURE 2 |
|---|--------------------|



LEGEND

- ▬▬▬▬▬ CLOSED PORTION OF INTERSTATE
- ▬▬▬▬▬ RAMP TO BE CLOSED
- ▬▬▬▬▬ PRIMARY ALTERNATE ROUTES
- ▬▬▬▬▬ SECONDARY ALTERNATE ROUTES
- 2 NUMBER OF LANES
- 1 INCIDENT LOCATION
- DIRECTION OF ROUTED TRAFFIC
- ⊗ SIGNALIZED INTERSECTION
- EXISTING DETOUR SIGN
- PROPOSED DETOUR SIGN
- PROPOSED VMS SIGN

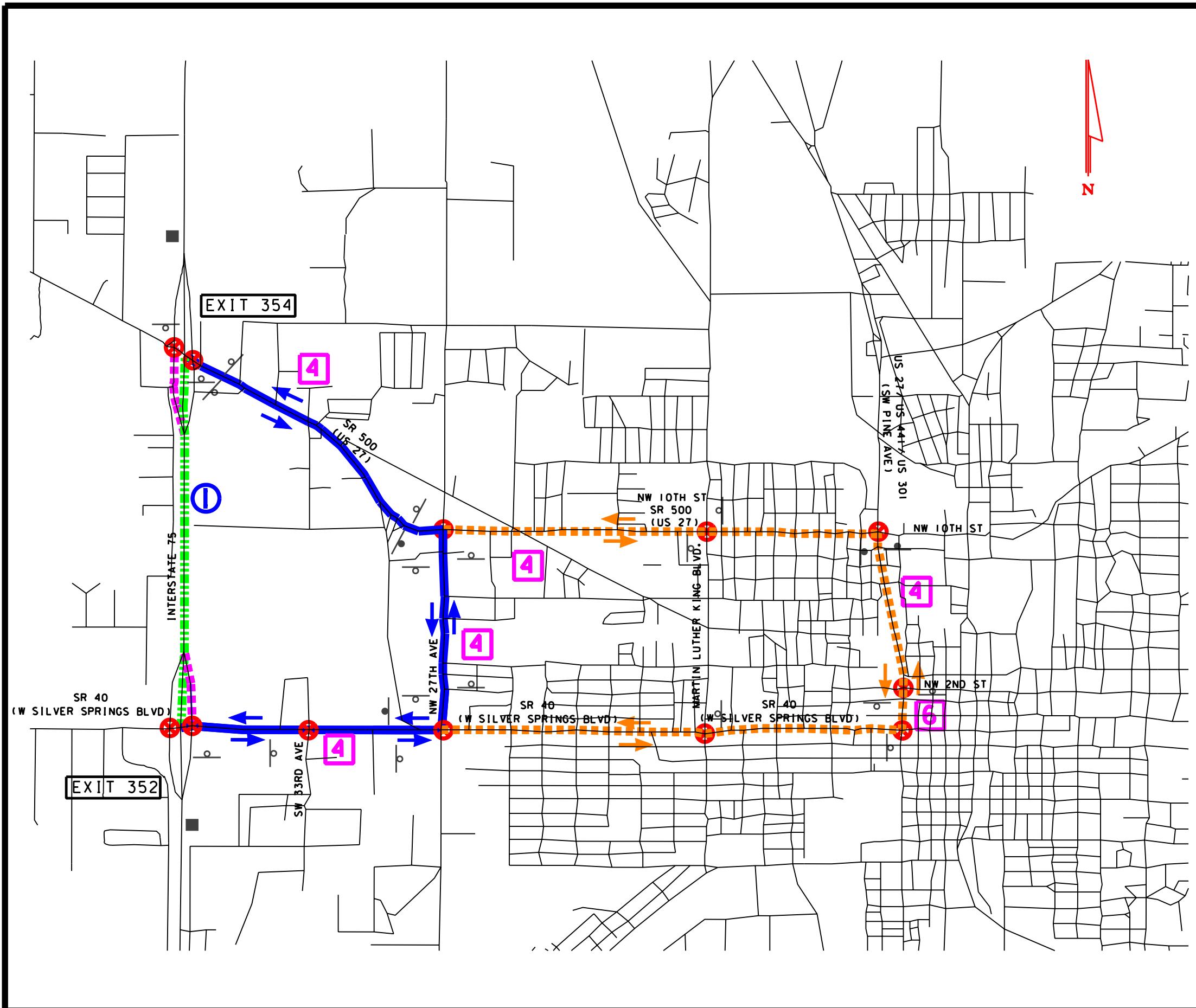
- LIMITS OF CLOSURE:**
SR 200 TO SR 40
- RAMPS TO CLOSE: (2)**
SR 200 NB ENTRANCE RAMP
SR 40 SB ENTRANCE RAMP
- NB I-75 PRIMARY REROUTE:**
- 1) USE SR 200 (SW COLLEGE RD) EXIT.
 - 2) TURN RIGHT ON SR 200 (SW COLLEGE RD).
 - 3) TURN LEFT ON CR 475A (NW 27TH AVE).
 - 4) TURN LEFT ON SR 40 (W SILVER SPRINGS RD).
- SB I-75 PRIMARY REROUTE:**
- 1) USE SR 40 (W SILVER SPRINGS RD) EXIT.
 - 2) TURN LEFT ON SR 40 (W SILVER SPRINGS BLVD).
 - 3) TURN RIGHT ON CR 475A (NW 27TH AVE).
 - 4) TURN RIGHT ON SR 200 (SW COLLEGE RD).
- NB I-75 SECONDARY REROUTE:**
- 1) USE SR 200 (SW COLLEGE RD) EXIT.
 - 2) TURN RIGHT ON SR 200 (SW COLLEGE RD).
 - 3) TURN LEFT ON MARTIN LUTHER KING AVE.
 - 4) TURN LEFT ON SR 40 (W SILVER SPRINGS BLVD).
- SB I-75 SECONDARY REROUTE:**
- 1) USE SR 40 (W SILVER SPRINGS BLVD) EXIT.
 - 2) TURN LEFT ON SR 40 (W SILVER SPRINGS BLVD).
 - 3) TURN RIGHT ON MARTIN LUTHER KING AVE.
 - 4) TURN RIGHT ON SR 200 (SW COLLEGE RD).

NOTE: LAW ENFORCEMENT TO BE USED AT INTERSECTIONS AS NECESSARY.

| REVISIONS | | |
|-----------|----|-------------|
| DATE | BY | DESCRIPTION |
| | | |
| | | |

ROAD CLOSURE FROM:
SR 200 TO SR 40

| | |
|---|--------------------|
| TRAFFIC INCIDENT MANAGEMENT PLAN | FIGURE 3 |
|---|--------------------|



LEGEND

- ▬▬▬▬▬ CLOSED PORTION OF INTERSTATE
- ▬▬▬▬▬ RAMP TO BE CLOSED
- ▬▬▬▬▬ PRIMARY ALTERNATE ROUTES
- ▬▬▬▬▬ SECONDARY ALTERNATE ROUTES
- 4 NUMBER OF LANES
- I INCIDENT LOCATION
- DIRECTION OF ROUTED TRAFFIC
- ⊗ SIGNALIZED INTERSECTION
- EXISTING DETOUR SIGN
- PROPOSED DETOUR SIGN
- PROPOSED VMS SIGN

LIMITS OF CLOSURE:
 SR 40 TO SR 500

RAMPS TO CLOSE: (2)
 SR 40 NB ENTRANCE RAMP
 SR 500 SB ENTRANCE RAMP

NB I-75 PRIMARY REROUTE:

- 1) USE SR 40 (W SILVER SPRINGS BLVD) EXIT.
- 2) TURN RIGHT ON SR 40 (W SILVER SPRINGS BLVD).
- 3) TURN LEFT ON NW 27TH AVE.
- 4) TURN LEFT ON SR 500 (US 27).

SB I-75 PRIMARY REROUTE:

- 1) USE SR 500 (US 27) EXIT.
- 2) TURN LEFT ON SR 500 (US 27).
- 3) TURN RIGHT ON NW 27 AVE.
- 4) TURN RIGHT ON SR 40 (W SILVER SPRINGS BLVD).

NB I-75 SECONDARY REROUTE:

- 1) USE SR 40 (W SILVER SPRINGS BLVD) EXIT.
- 2) TURN RIGHT ON SR 40 (W SILVER SPRINGS BLVD).
- 3) TURN LEFT ON US 27/441/301 (SE PINE AVE).
- 4) TURN LEFT ON SR 500 (US 27).

SB I-75 SECONDARY REROUTE:

- 1) USE SR 500 (US 27) EXIT.
- 2) TURN LEFT ON SR 500 (US 27).
- 3) TURN RIGHT ON US 27/441/301 (SE PINE AVE).
- 4) TURN RIGHT ON SR 40 (W SILVER SPRINGS BLVD).

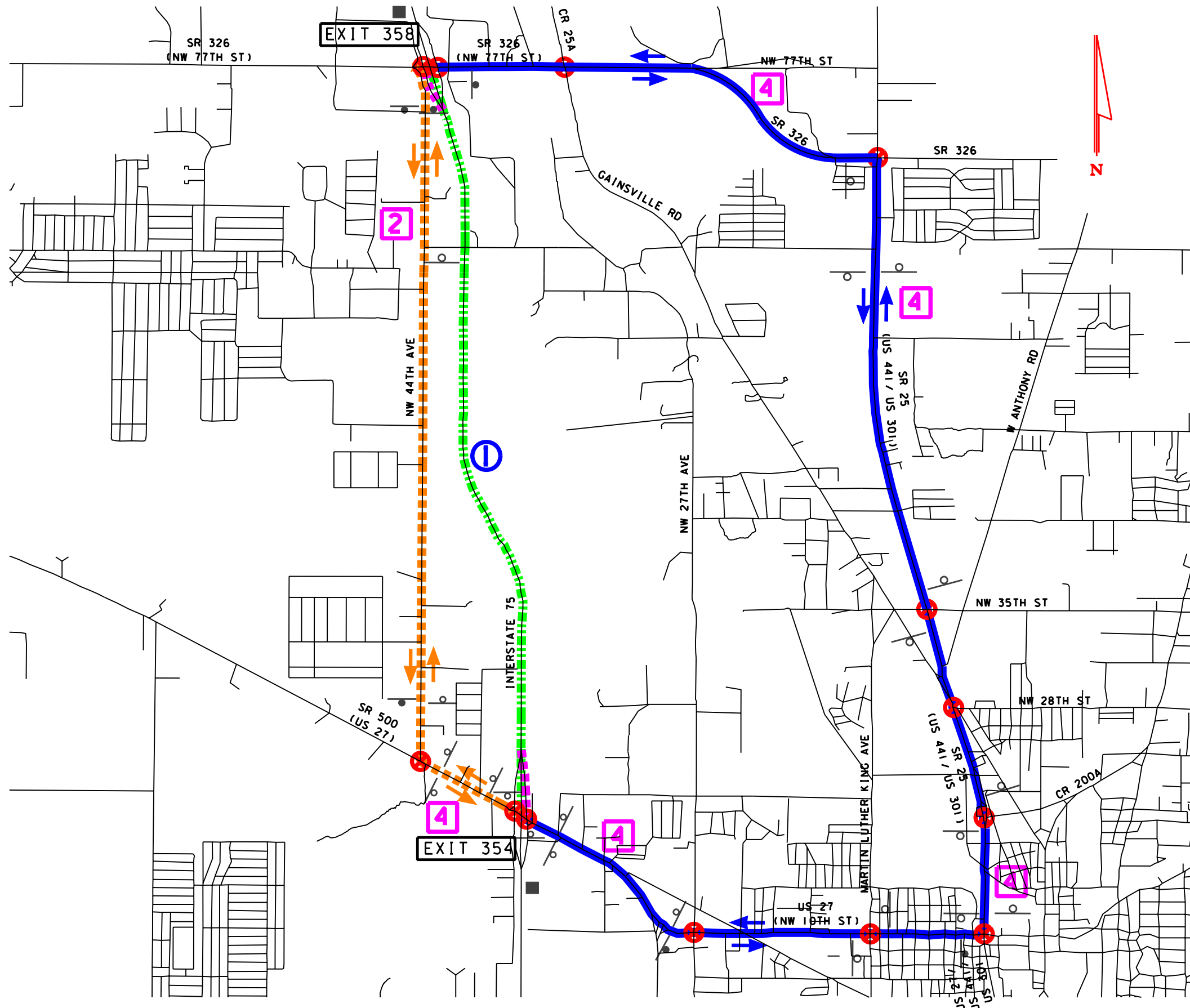
NOTE: LAW ENFORCEMENT TO BE USED AT INTERSECTIONS AS NECESSARY.

| REVISIONS | | |
|-----------|----|-------------|
| DATE | BY | DESCRIPTION |
| | | |
| | | |

ROAD CLOSURE FROM:

SR 40 TO SR 500

| | |
|---|---------------------|
| TRAFFIC INCIDENT MANAGEMENT PLAN | FIGURE 4 |
|---|---------------------|



LEGEND

- ▬▬▬▬▬ CLOSED PORTION OF INTERSTATE RAMP TO BE CLOSED
- ▬▬▬▬▬ PRIMARY ALTERNATE ROUTES
- ▬▬▬▬▬ SECONDARY ALTERNATE ROUTES
- 2 NUMBER OF LANES
- ⊖ INCIDENT LOCATION
- ➔ DIRECTION OF ROUTED TRAFFIC
- X SIGNALIZED INTERSECTION
- ⊖ EXISTING DETOUR SIGN
- ⊖ PROPOSED DETOUR SIGN
- PROPOSED VMS SIGN

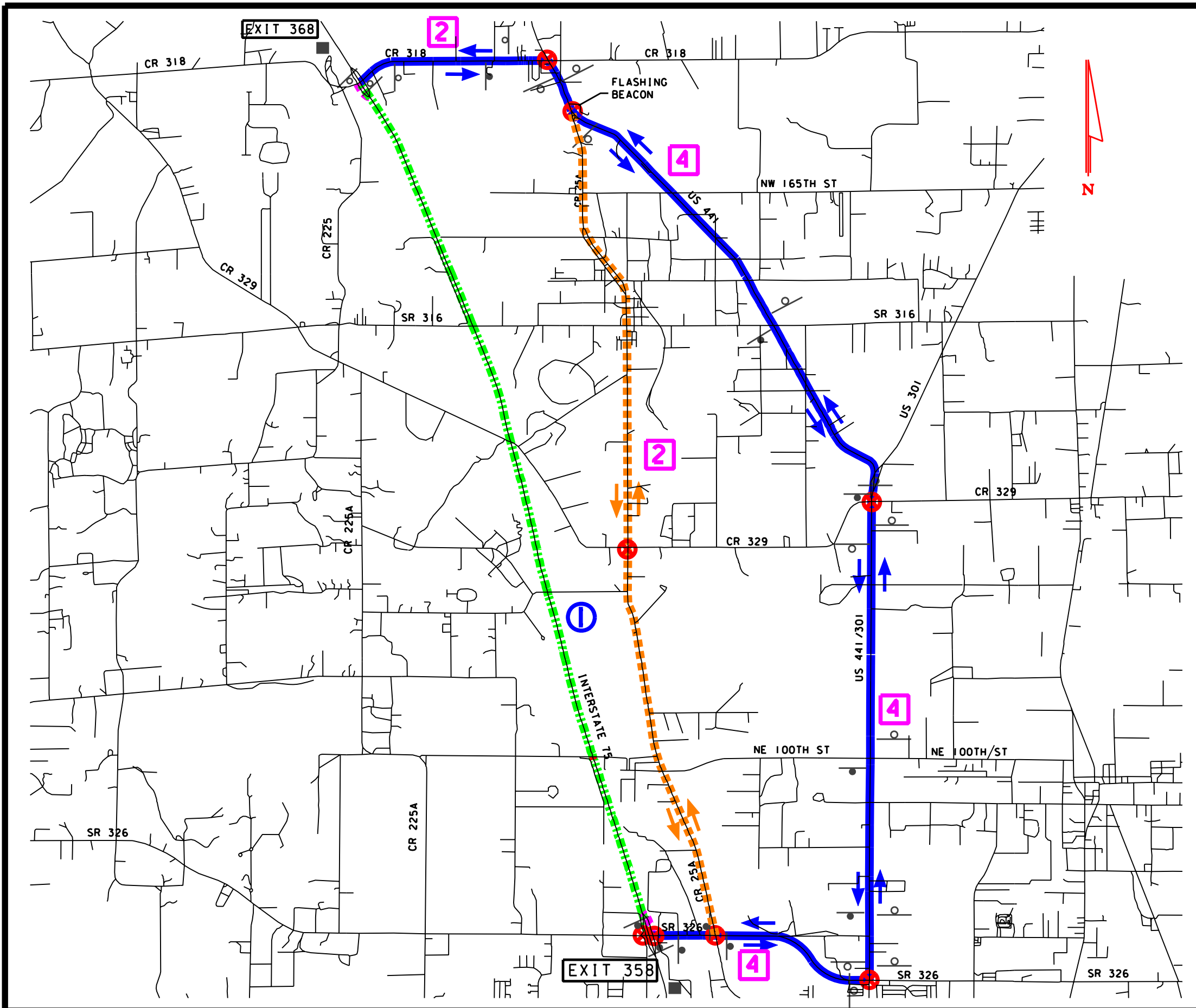
- LIMITS OF CLOSURE:**
SR 500 TO SR 326
- RAMPS TO CLOSE: (2)**
SR 500 NB ENTRANCE RAMP
SR 326 SB ENTRANCE RAMP
- NB I-75 PRIMARY REROUTE:**
1) USE SR 500 (US 27) EXIT.
2) TURN RIGHT ON SR 500 (US 27).
3) TURN LEFT ON SR 25 (US 441/301).
4) TURN LEFT ON SR 326.
- SB I-75 PRIMARY REROUTE:**
1) USE SR 326 EXIT.
2) TURN LEFT ON SR 326.
3) TURN RIGHT ON SR 25 (US 441/301).
4) TURN RIGHT ON SR 500 (US 27).
- NB I-75 SECONDARY REROUTE:**
1) USE SR 500 (US 27) EXIT.
2) TURN LEFT ON SR 500 (US 27).
3) TURN RIGHT ON NW 44TH AVE.
4) TURN RIGHT ON SR 326 (NW 77TH AVE).
- SB I-75 SECONDARY REROUTE:**
1) USE SR 326 (NW 77TH ST) EXIT.
2) TURN RIGHT ON SR 326 (NW 77TH ST).
3) TURN LEFT ON NW 44TH AVE.
4) TURN LEFT ON SR 500 (US 27).

NOTE: LAW ENFORCEMENT TO BE USED AT INTERSECTIONS AS NECESSARY.

| REVISIONS | | |
|-----------|----|-------------|
| DATE | BY | DESCRIPTION |
| | | |
| | | |

ROAD CLOSURE FROM:
SR 500 TO SR 326

| | |
|---|--------------------|
| TRAFFIC INCIDENT MANAGEMENT PLAN | FIGURE 5 |
|---|--------------------|



LEGEND

- ▬▬▬▬▬ CLOSED PORTION OF INTERSTATE
- ▬▬▬▬▬ RAMP TO BE CLOSED
- ▬▬▬▬▬ PRIMARY ALTERNATE ROUTES
- ▬▬▬▬▬ SECONDARY ALTERNATE ROUTES
- 2 NUMBER OF LANES
- ⊖ INCIDENT LOCATION
- ➔ DIRECTION OF ROUTED TRAFFIC
- ⊗ SIGNALIZED INTERSECTION
- ⊖ EXISTING DETOUR SIGN
- ⊖ PROPOSED DETOUR SIGN
- PROPOSED VMS SIGN

LIMITS OF CLOSURE:
 SR 326 TO CR 318

RAMPS TO CLOSE: (2)
 SR 326 NB ENTRANCE RAMP
 CR 318 SB ENTRANCE RAMP

NB I-75 PRIMARY REROUTE:

- 1) USE SR 326 (NW 77TH ST) EXIT.
- 2) TURN RIGHT ON SR 326 (NW 77TH ST).
- 3) TURN LEFT ON US 441/US 301.
- 4) CONTINUE ON US 441.
- 5) TURN LEFT ON CR 318.

SB I-75 PRIMARY REROUTE:

- 1) USE CR 318 EXIT.
- 2) TURN LEFT ON CR 318.
- 3) TURN RIGHT ON US 441.
- 4) CONTINUE ON US 441/US 301.
- 5) TURN RIGHT ON SR 326 (NW 77TH ST)

NB I-75 SECONDARY REROUTE:

- 1) USE SR 326 (NW 77TH ST) EXIT.
- 2) TURN RIGHT ON SR 326
- 3) TURN LEFT ON CR 25A.
- 4) TURN LEFT ON US 441.
- 5) TURN LEFT CR 318.

SB I-75 SECONDARY REROUTE:

- 1) USE CR 318 EXIT.
- 2) TURN LEFT ON CR 318.
- 3) TURN RIGHT ON US 441.
- 4) TURN RIGHT ON CR 25A.
- 5) TURN RIGHT ON SR 326 (NW 77TH ST).

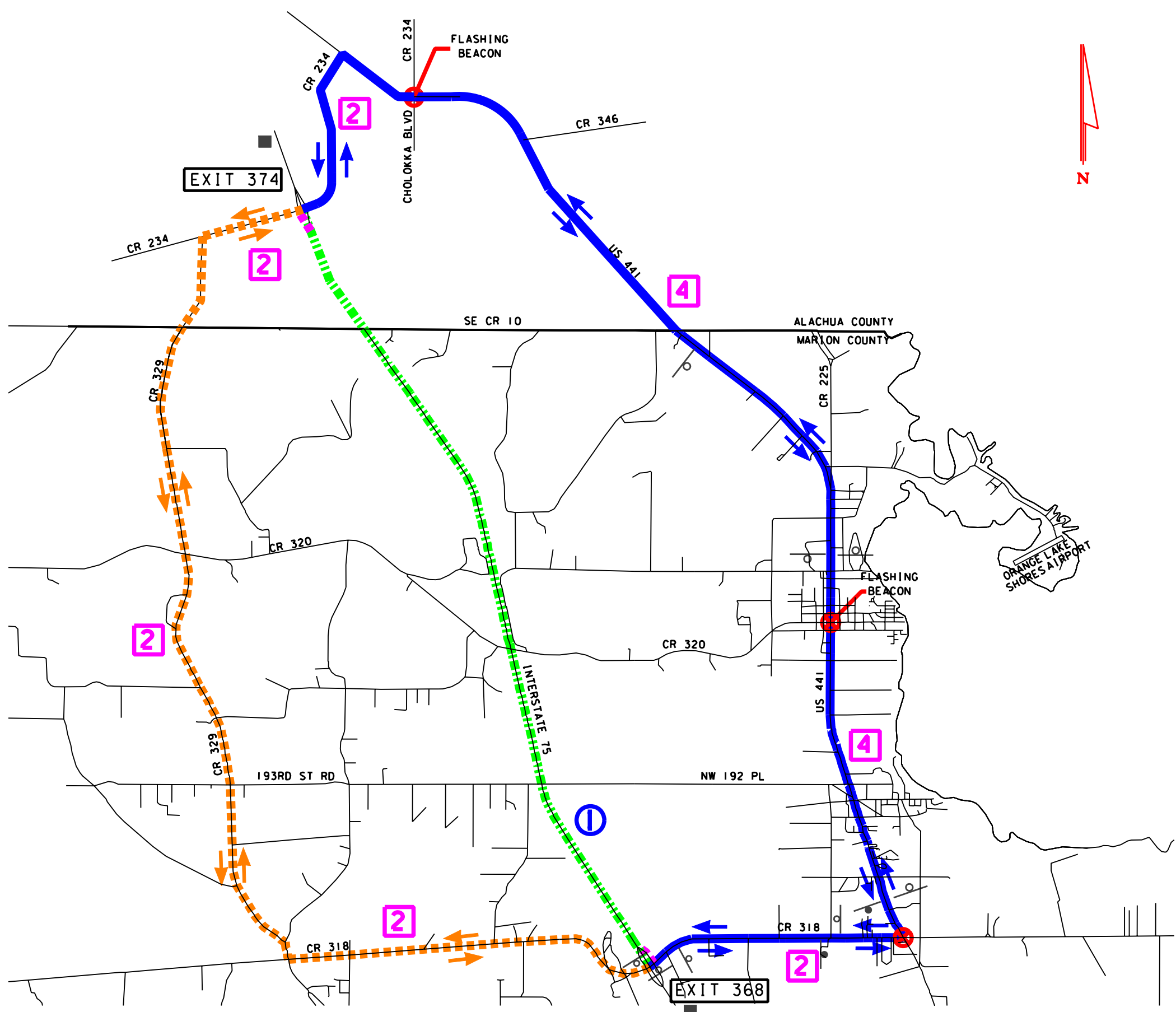
NOTE: LAW ENFORCEMENT TO BE USED AT INTERSECTIONS AS NECESSARY.

| REVISIONS | | |
|-----------|----|-------------|
| DATE | BY | DESCRIPTION |
| | | |
| | | |

ROAD CLOSURE FROM:

SR 326 TO CR 318

| | |
|---|---------------------|
| TRAFFIC INCIDENT MANAGEMENT PLAN | FIGURE 6 |
|---|---------------------|



LEGEND

- ▬▬▬▬▬ CLOSED PORTION OF INTERSTATE
- ▬▬▬▬▬ RAMP TO BE CLOSED
- ▬▬▬▬▬ PRIMARY ALTERNATE ROUTES
- ▬▬▬▬▬ SECONDARY ALTERNATE ROUTES
- 2 NUMBER OF LANES
- 1 INCIDENT LOCATION
- ➔ DIRECTION OF ROUTED TRAFFIC
- ⊗ SIGNALIZED INTERSECTION
- ⊖ EXISTING DETOUR SIGN
- ⊕ PROPOSED DETOUR SIGN
- PROPOSED VMS SIGN

- LIMITS OF CLOSURE:**
CR 318 TO CR 234
- RAMPS TO CLOSE: (2)**
CR 318 NB ENTRANCE RAMP
CR 234 SB ENTRANCE RAMP
- NB I-75 PRIMARY REROUTE:**
- 1) USE CR 318 EXIT.
 - 2) TURN RIGHT ON CR 318.
 - 3) TURN LEFT ON US 441.
 - 4) TURN LEFT ON CR 234.
- SB I-75 PRIMARY REROUTE:**
- 1) USE CR 234 EXIT.
 - 2) TURN LEFT ON CR 234.
 - 3) TURN RIGHT ON US 441.
 - 4) TURN RIGHT ON CR 318.
- NB I-75 SECONDARY REROUTE:**
- 1) USE CR 318 EXIT.
 - 2) TURN LEFT ON CR 318.
 - 3) TURN RIGHT ON CR 329.
 - 4) TURN RIGHT ON CR 234.
- SB I-75 SECONDARY REROUTE:**
- 1) USE CR 234 EXIT.
 - 2) TURN RIGHT ON CR 234.
 - 3) TURN LEFT ON CR 329.
 - 4) TURN LEFT ON CR 318.

NOTE: LAW ENFORCEMENT TO BE USED AT INTERSECTIONS AS NECESSARY.

| REVISIONS | | |
|-----------|----|-------------|
| DATE | BY | DESCRIPTION |
| | | |
| | | |

ROAD CLOSURE FROM:
CR 318 AND CR 234

| | |
|---|--------------------|
| TRAFFIC INCIDENT MANAGEMENT PLAN | FIGURE 7 |
|---|--------------------|